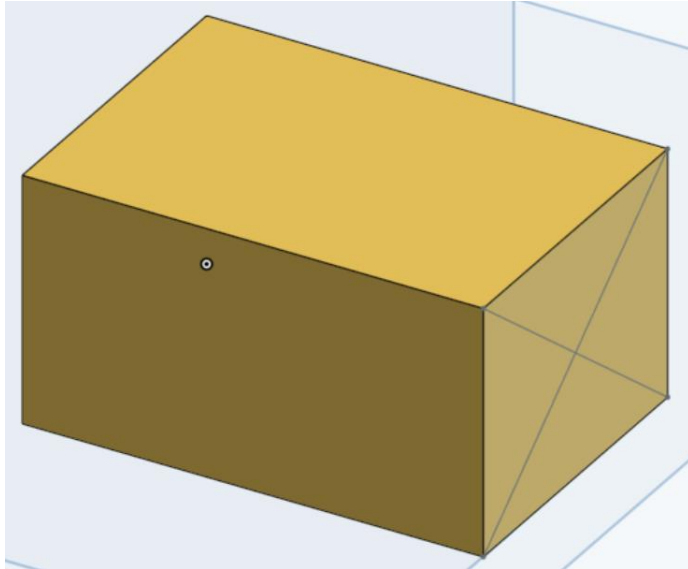
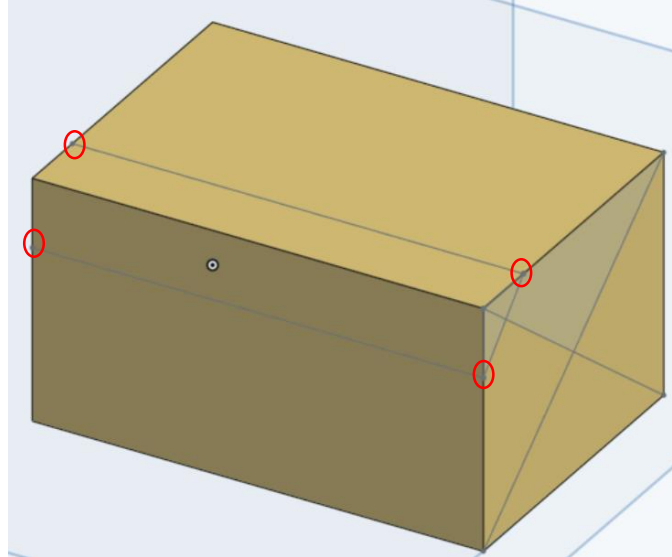


ROBOT BLOCKS INSTRUCTIONS

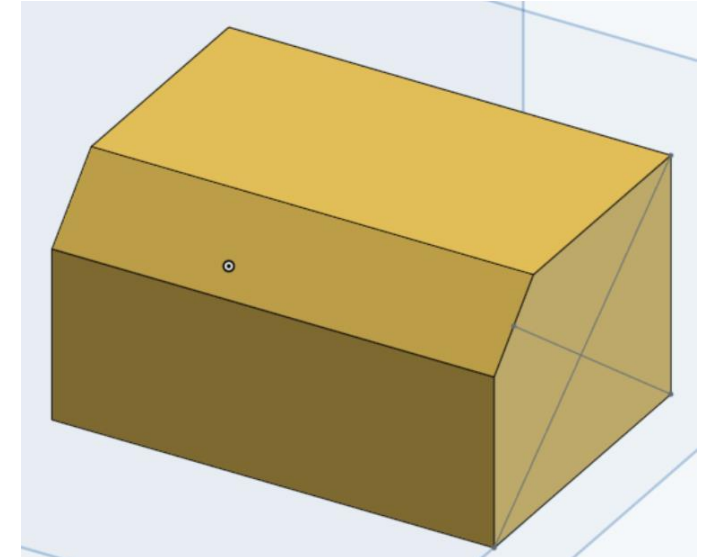
- 1) Lightly sand down all flat surfaces
- 2) Find the centre of both ends



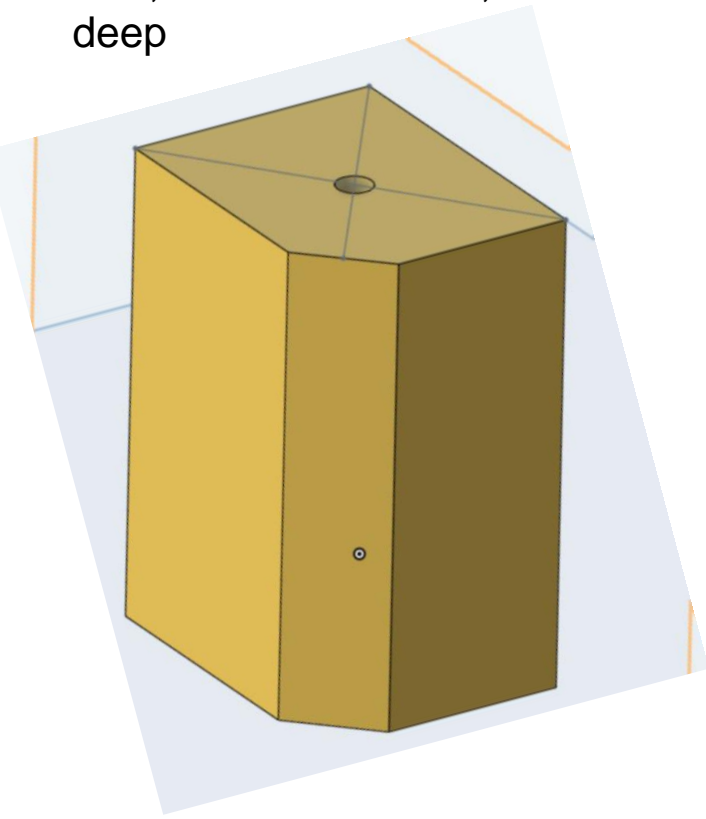
- 3) Measure 10mm back from one edge on both ends
- 4) Join them up to mark out where the bevel will be cut..



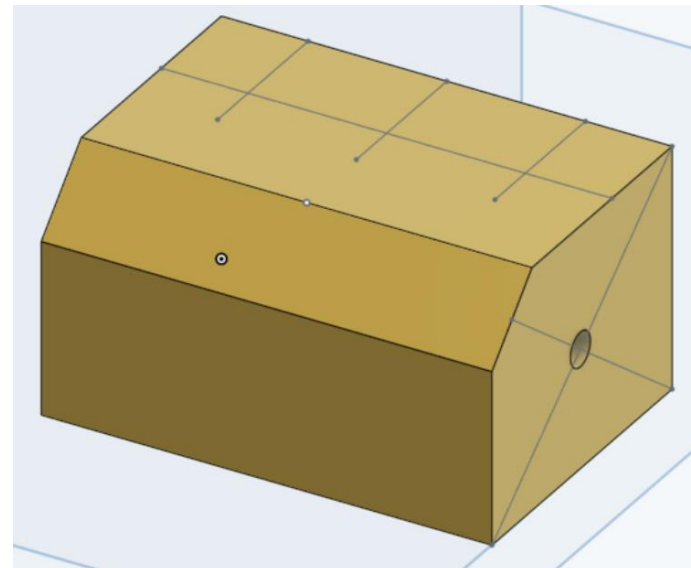
- 5) Use the sanding machine and the pre-made jig to sand down the bevel



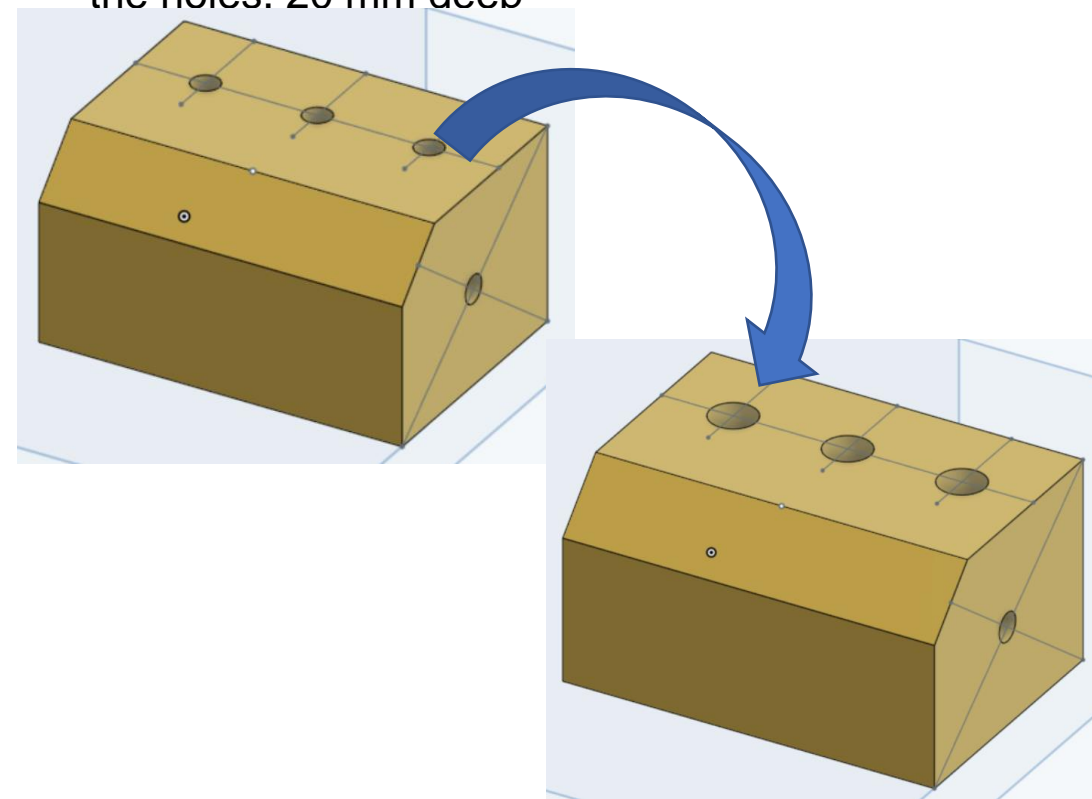
- 7) Use a pillar drill with depth stop, hold the work in a machine vice, drill a 5mm Hole, 20mm deep

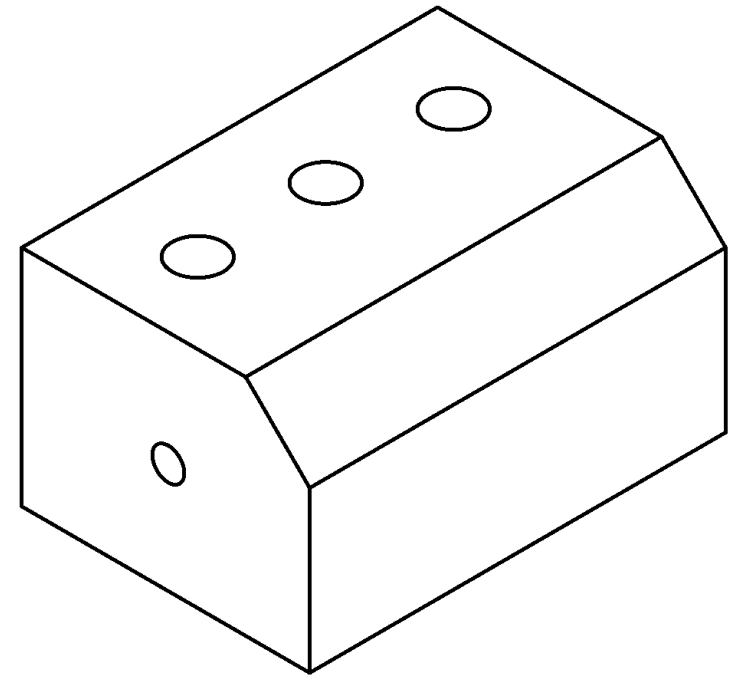
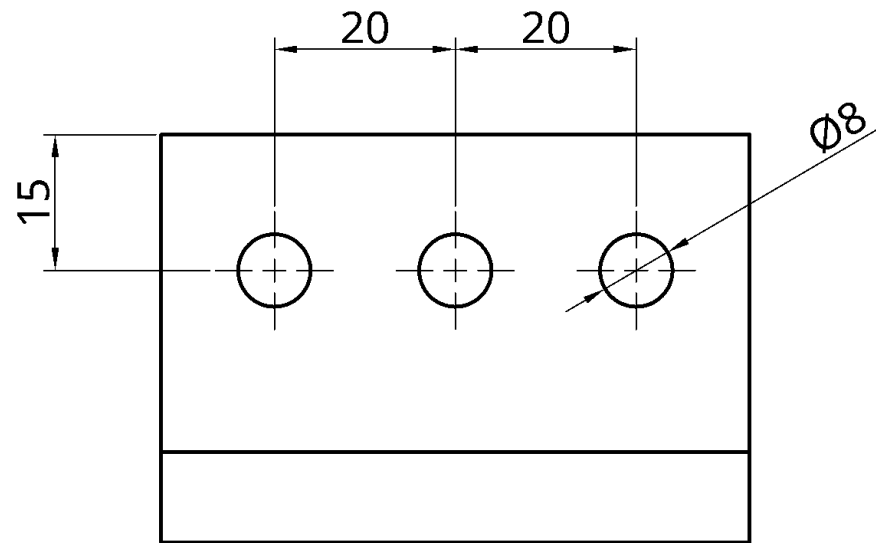
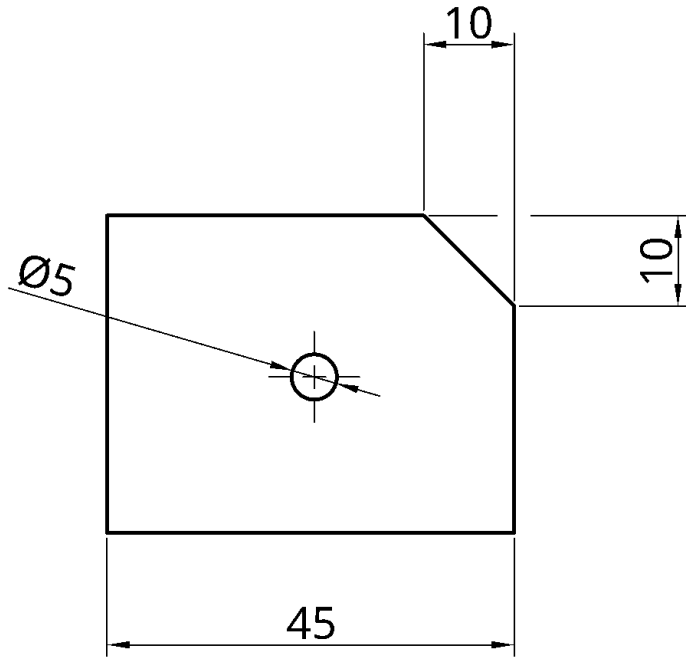
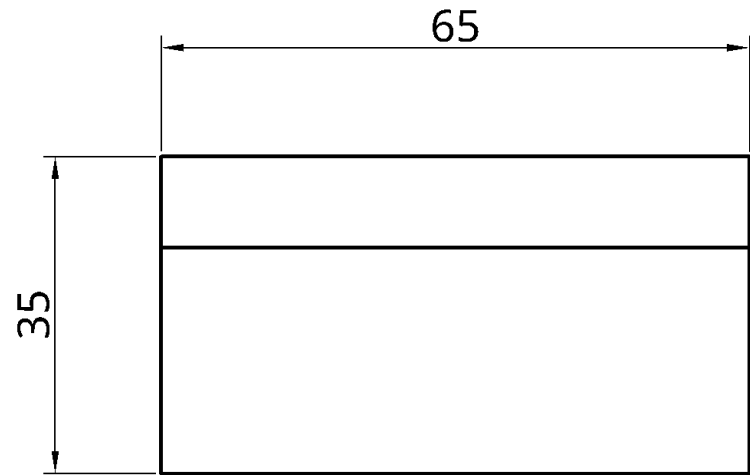


- 8) Mark out three points for drilling the pencil holder holes – refer to orthographic drawing for dimensions



- 10) Drill 5 mm pilot holes on the centre of the crosses
- 11) Use an 8mm drill to complete the holes. 20 mm deep





| | | | | | | |
|---|----------|---------------|-----------|------------|-------|---------|
| UNLESS OTHERWISE SPECIFIED, DIMENSIONS ARE IN MILLIMETERS ANGULAR = ± ° SURFACE FINISH √ | | NAME | SIGNATURE | DATE | TITLE | |
| | DRAWN | MATTHEW TWIGG | | 2023-07-19 | | |
| | CHECKED | | | | | |
| | APPROVED | | | | | |
| DO NOT SCALE DRAWING | | | | | SIZE | DWG NO. |
| BREAK ALL SHARP EDGES AND REMOVE BURRS | | | | | A4 | |
| FIRST ANGLE PROJECTION | MATERIAL | FINISH | | | SCALE | WEIGHT |
| | | | | | 1:1 | |
| | | | | | SHEET | 1 of 1 |