

2D Design End of Unit Test

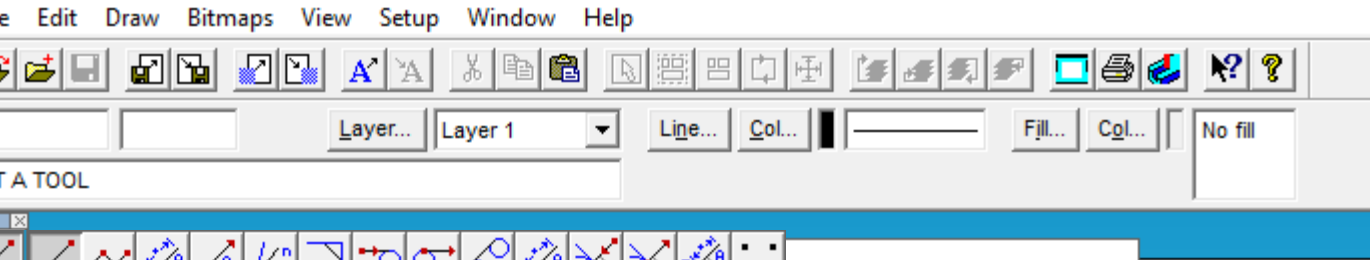
Group

Name

Date

HELPSHEET 1 OF 2

Use this to help you with the extended answers



Text Settings

Outline Font TechSoft Font

Font

Font name: Arial Font Style: Regular

Attributes

Line... Col... Fill... Col... Solid fill

Fill Characters Individually

Drop Shadow

Add drop shadow

X: 5 % Y: 5 %

Effects

Position... Characters...

OK Cancel Help Set Defaults

Sample: AaBbYyZz

Size/spacing

Height: 20.00mm Actual height of 'M'

Alignment: Align left Spacing...

Regular Polygon Settings

No. sides: 6 OK

Start angle: N/A Cancel

Side length: N/A Help

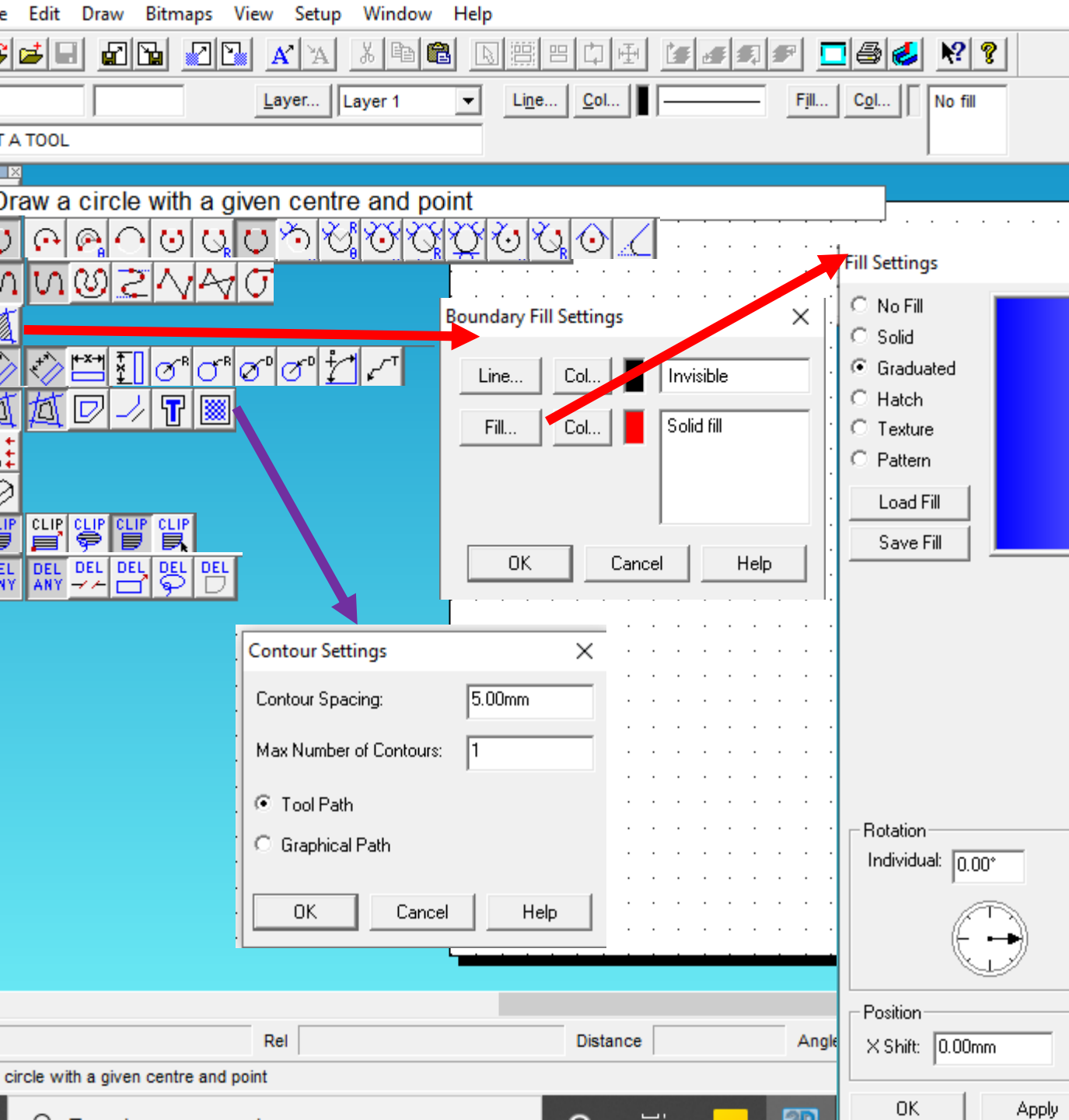
Internal radius: N/A

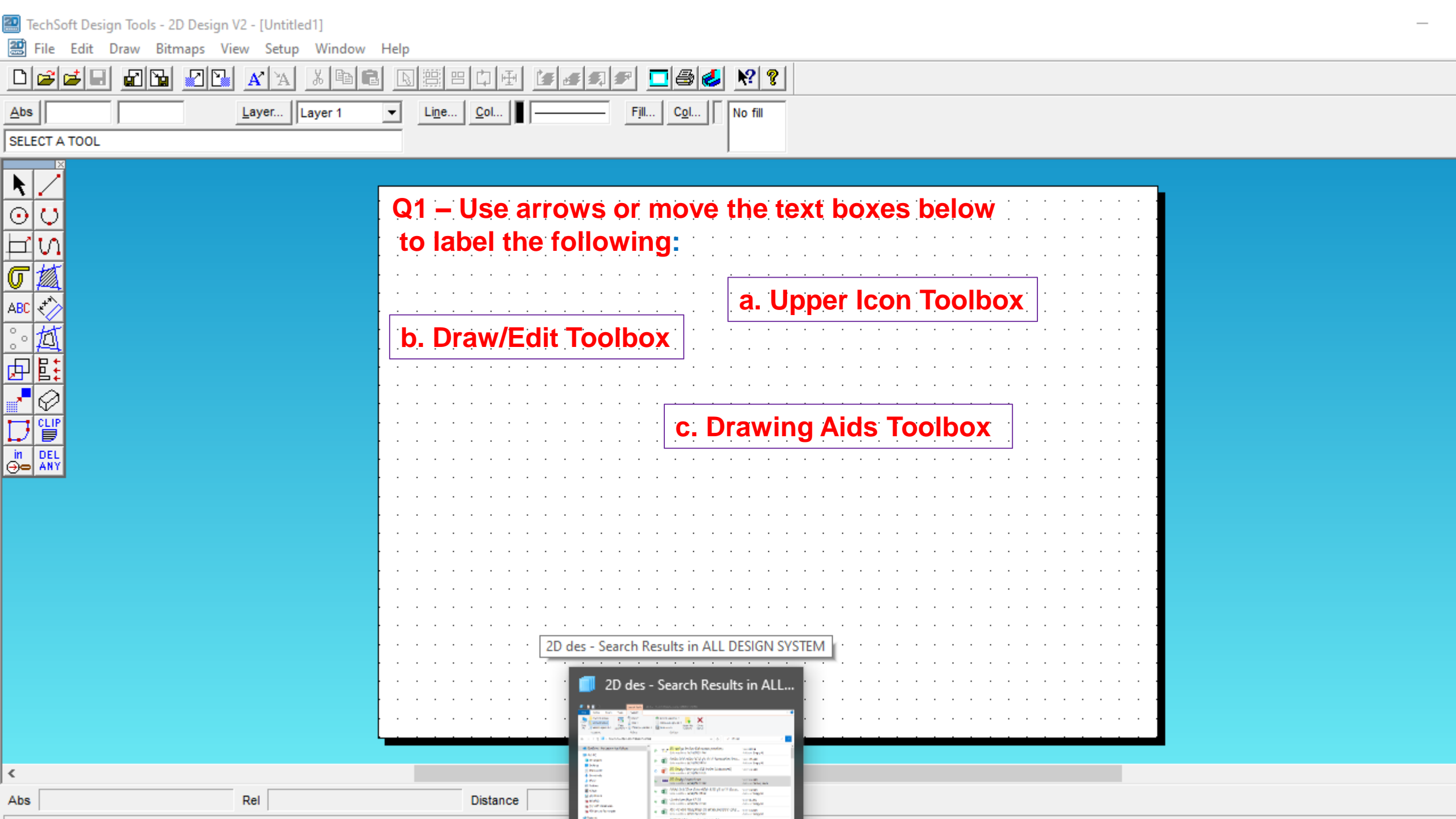
External radius: N/A

Anti-clockwise Clockwise

HELPSHEET 2012

Use this to help you with the extended answers





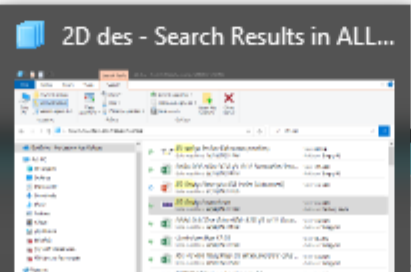
Q1 – Use arrows or move the text boxes below to label the following:

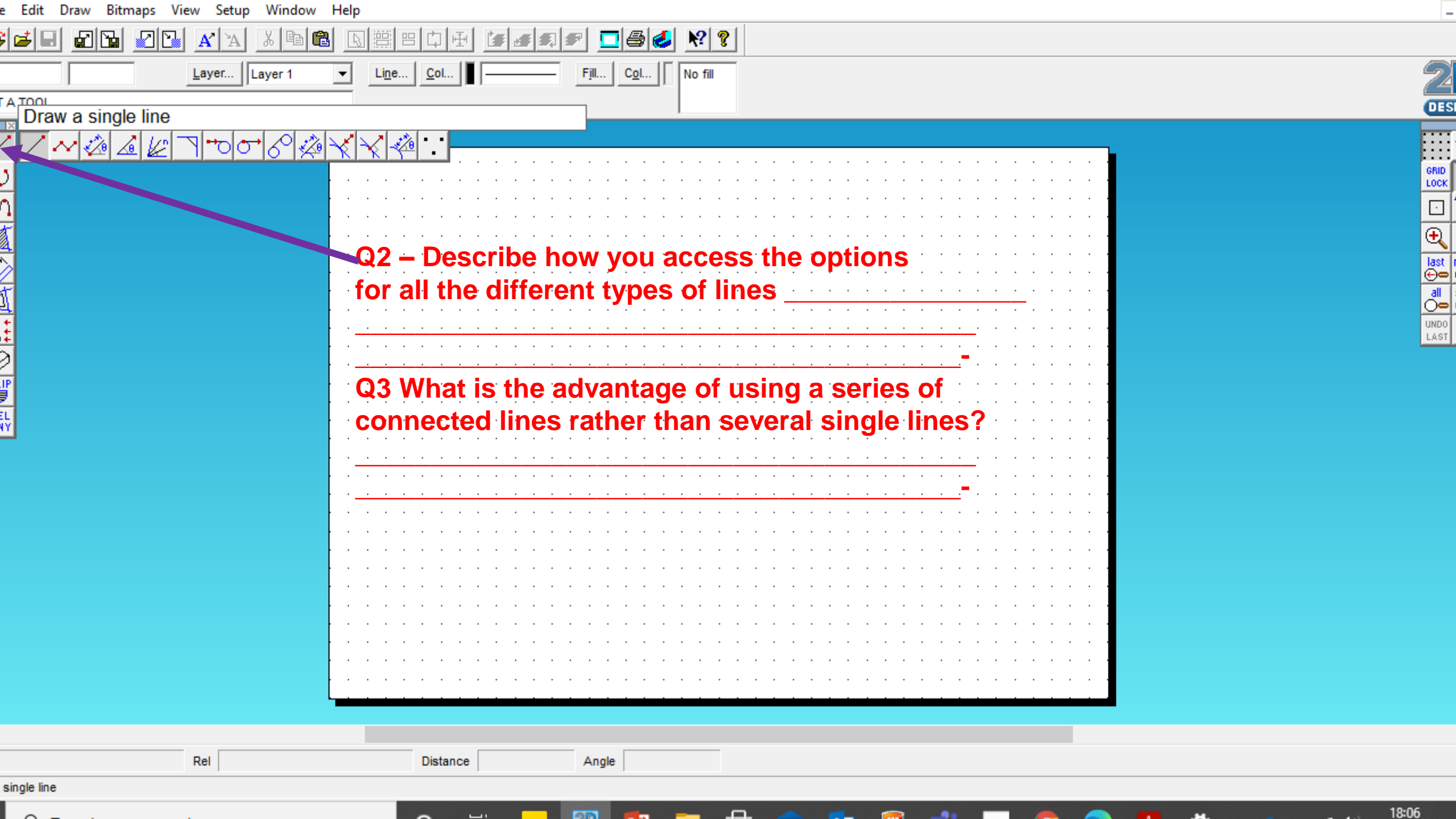
a. Upper Icon Toolbox

b. Draw/Edit Toolbox

c. Drawing Aids Toolbox

2D des - Search Results in ALL DESIGN SYSTEM



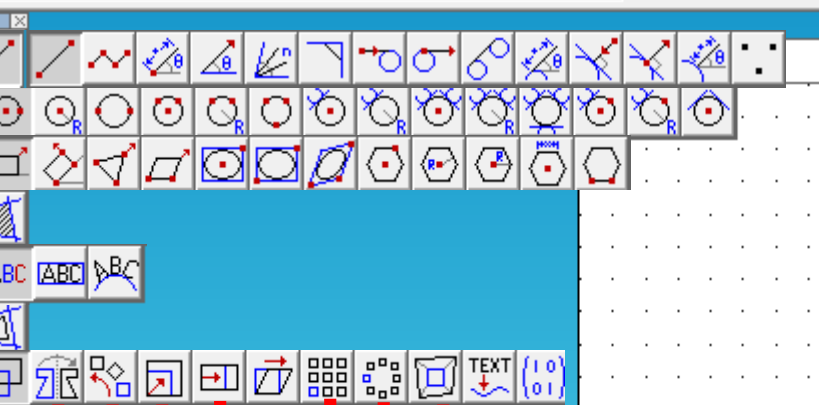


Q2 – Describe how you access the options for all the different types of lines _____

Q3 What is the advantage of using a series of connected lines rather than several single lines?

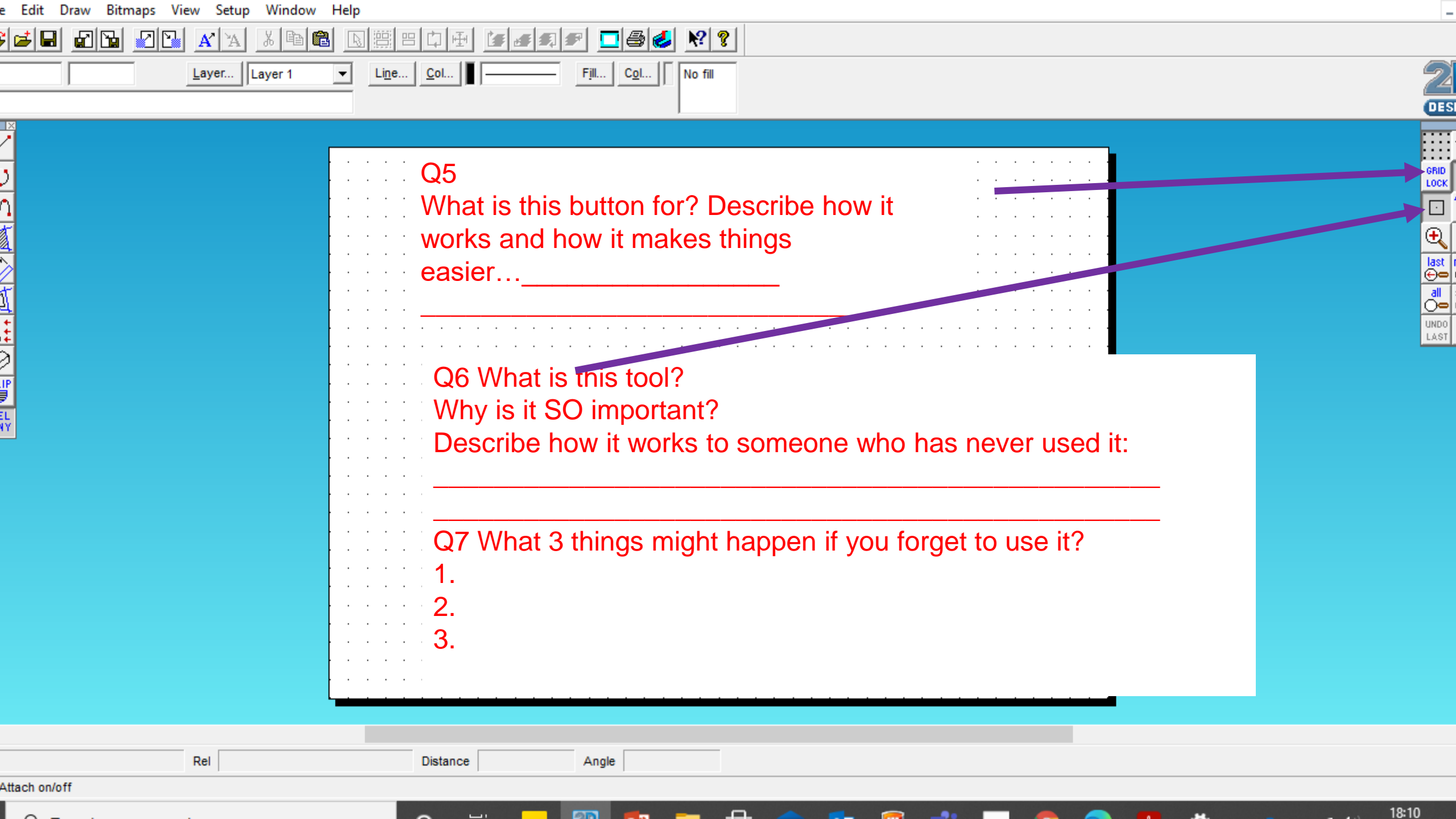
Rel Distance Angle

single line



Q 4, Parts a,b,c,d,e,f,g,h,i:
The Transform Menu is one of the most powerful tools to use.
It has many options for very quickly changing the overall shape of a drawing you have done. Name the tools-
Tools = (Click into the test boxes and say what you think the name of the tool is OR what you think the tool does)

- Tool = e.g. "DISTORT"
- Tool = _____
- Tool = _____
- Tool = _____
- Tool = _____
- Tool = _____
- Tool = _____
- Tool = _____



Q5

What is this button for? Describe how it works and how it makes things easier... _____

Q6 What is this tool?

Why is it SO important?

Describe how it works to someone who has never used it:

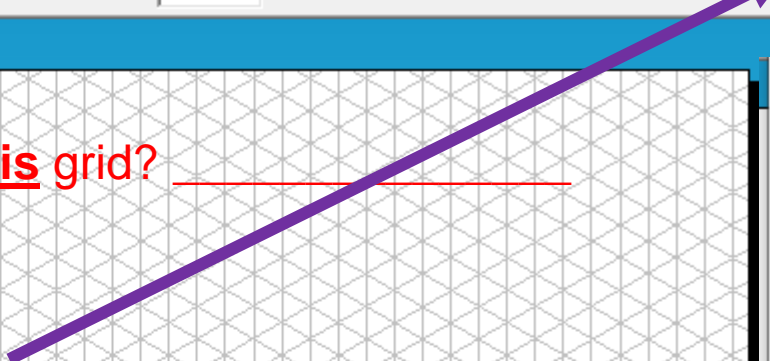
Q7 What 3 things might happen if you forget to use it?

- 1.
- 2.
- 3.

Q8 What is the name of this grid? _____

Q9 Move the red ellipse from here to highlight
Which option you would select to make this grid appear

Q10 What might you use this special grid for?



Grid/Coordinates Settings

Grid Spacing
X 10.00mm Y 10.00mm

Step Spacing
X 1.00mm Y 1.00mm

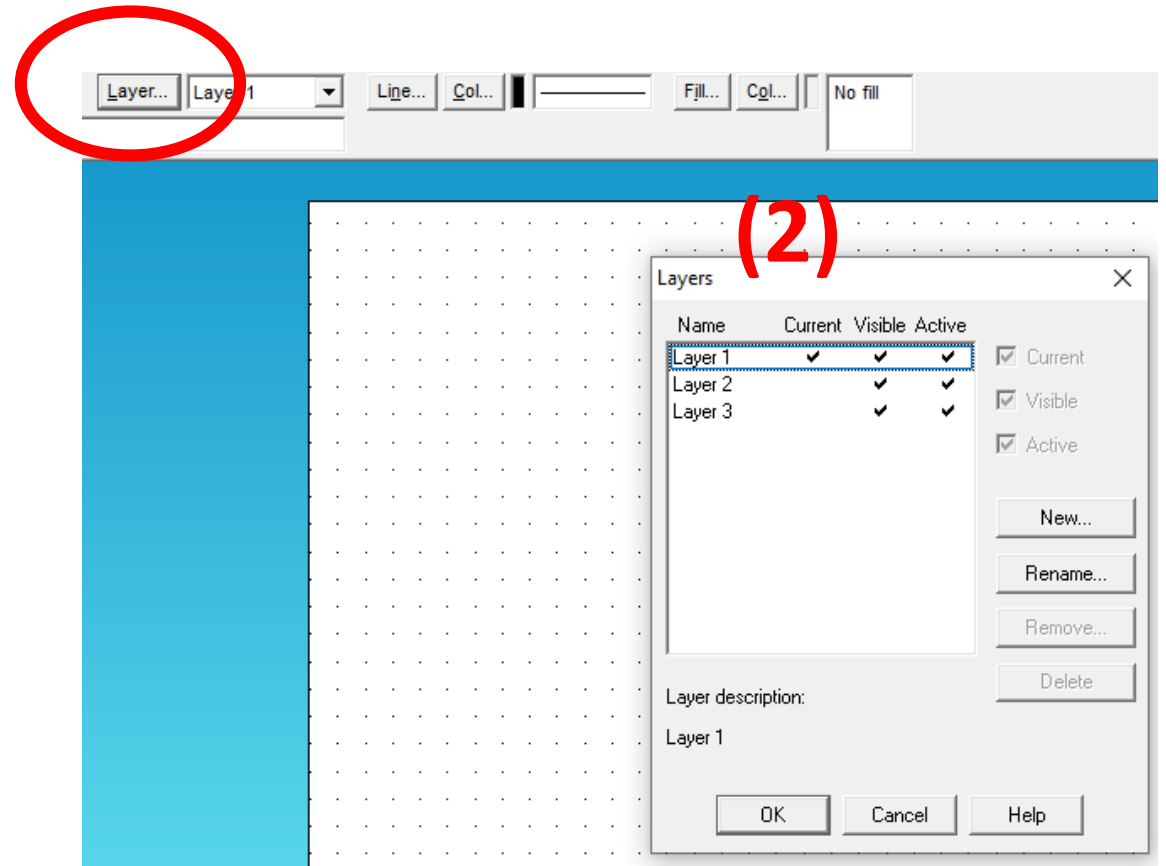
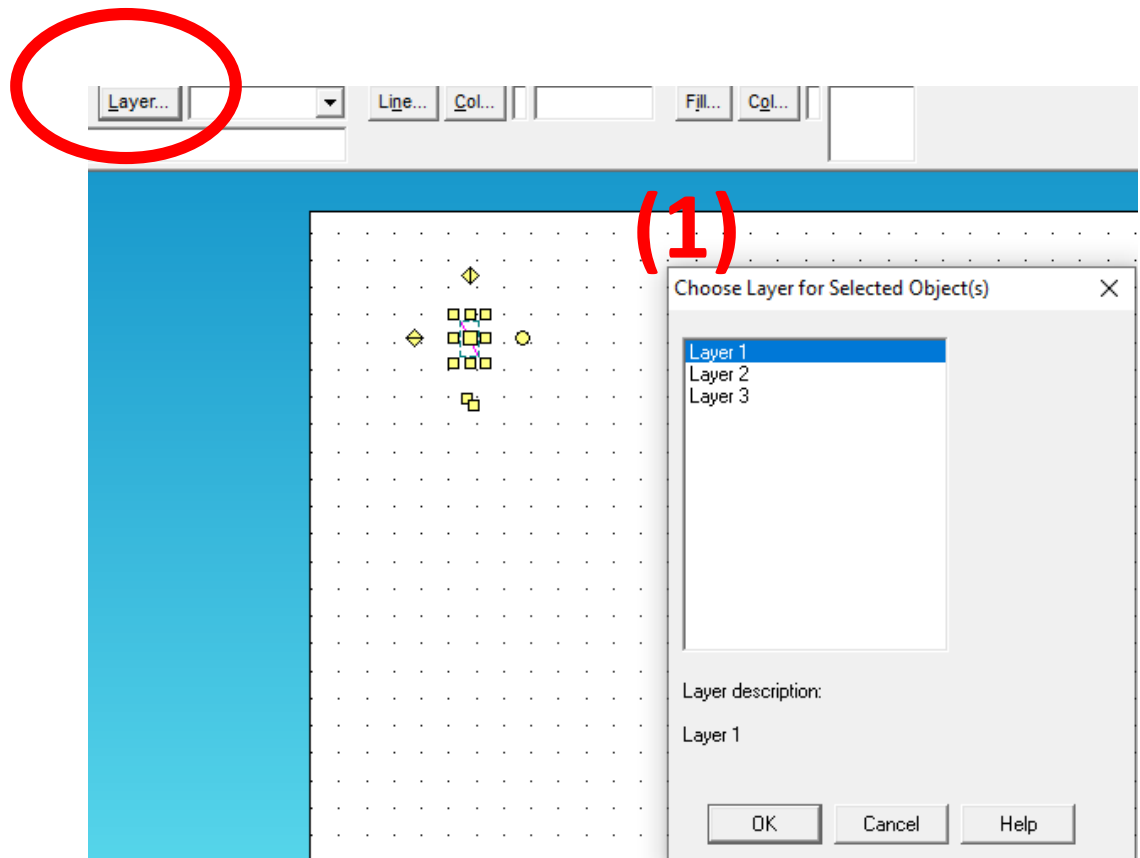
Grid Angle
 Orthogonal Oblique
 Isometric Custom
X Angle 0.00° Y Angle 90.00°

Coordinates
 Orthogonal Axial

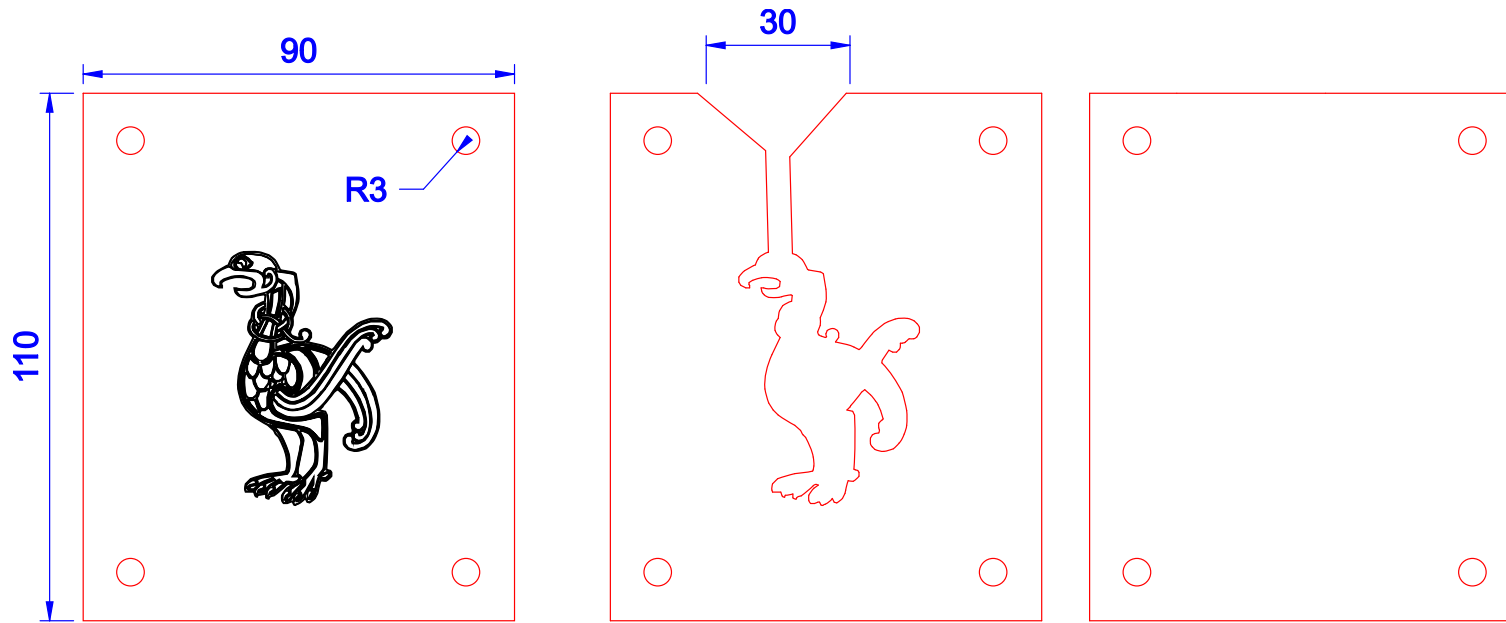
Grid Appearance
Style Dots Colour... [Black]
 Grid in foreground Minimum density 4
 Show step spacing

OK Cancel Help Set Default

Q11 Explain the difference in the two pop-up menu options (1 & 2) below- they both come from clicking the Layers tab but why are they different and what do the two different menus allow you to do?



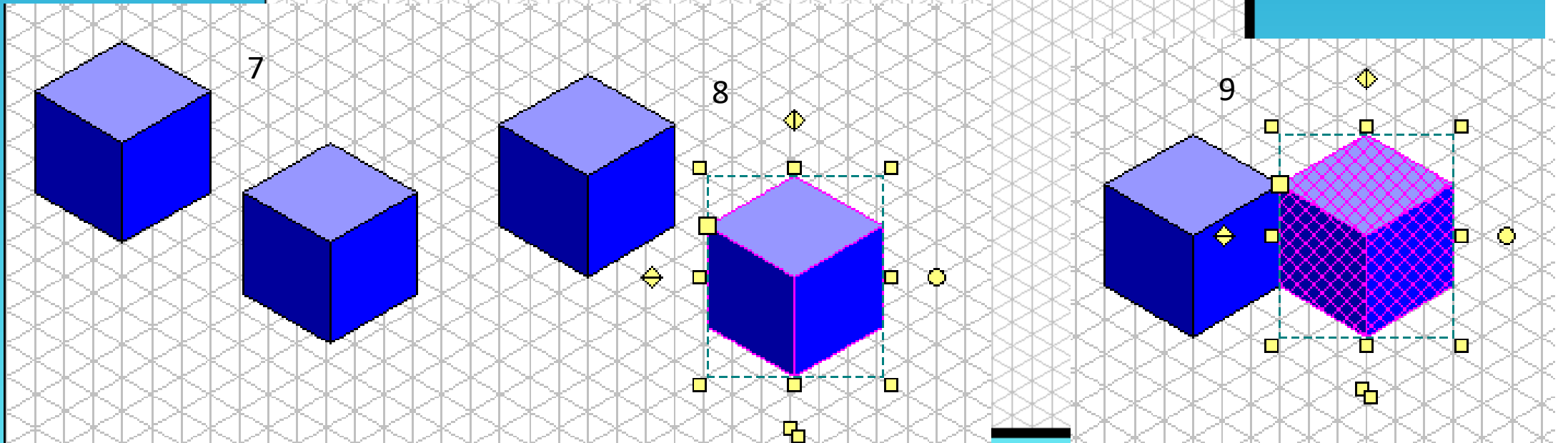
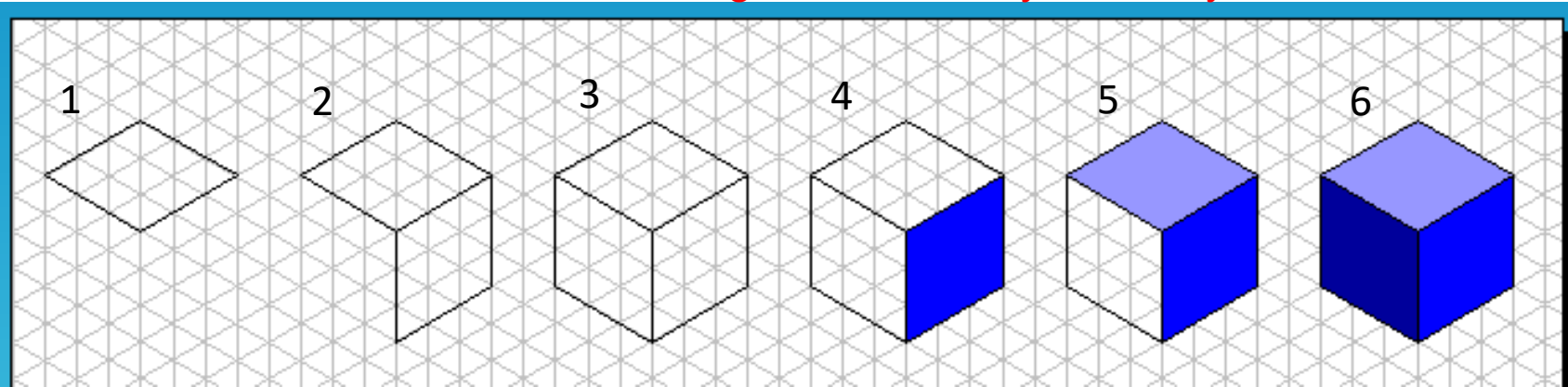
Q 12 Here is a three part mould for a pewter casting mould.
Explain, in the text box below, the process of using 2D design to create the mould. Use as much detail as possible for someone who has never used 2D design.



Explanation: _____

Q13 Describe the processes involved in creating two 3D cubes joined together (as if you were teaching someone new to the programme)

Use the correct names for the tools (refer back to the Helpsheets 1 & 2 to jog your memory) and use technical terms whenever necessary. You may cut and paste the correct button from one of the first two help sheets (slides 2 & 3) if you know the button but cannot name it Don't forget modifier keys! Write your answers on the next slide please....



Q13 answerspace:

- Step 1. Open 2D design and before you draw anything straight away select.....
- Step 2
- Step 3
- Step 4
- Step 5
- Step 6
- Step 7
- Step 8

Q14

When using all CAD programmes designers use a mouse or stylus in their drawing hand and operate the keyboards with their other hand.

One example is CTRL + Z – which is a shortcut for 'UNDO'

What other short cut key combinations do you think you know that are useful for CAD?

Q15

- Explain the difference between VECTOR and RASTER.
- Describe where you would use VECTOR graphics and why.
- Describe where you would use RASTER graphics and why.